

# Ultrasound step-by-step

## Long Liver

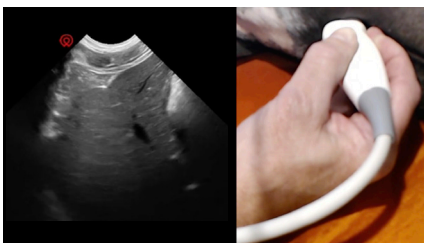


### Introduction:

The dot is going to be placed towards the dog's head, because of that, we know we are scanning the long access.

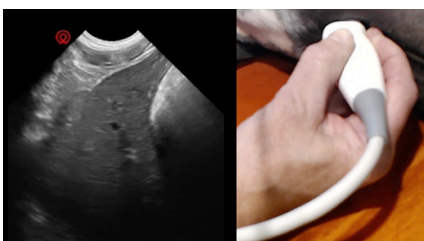


You should never hold it with your fist. Hold it flat in your palm. Apply the probe on the ventral midline which will grow an image.



As you watch the image grow, two things are important:

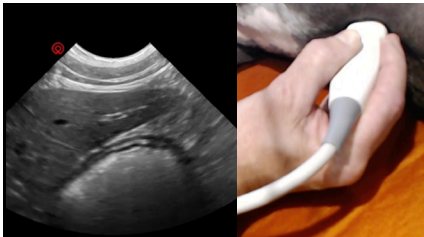
- 1) Overall Gain (Brightness)
- 2) Depth (Field of View)



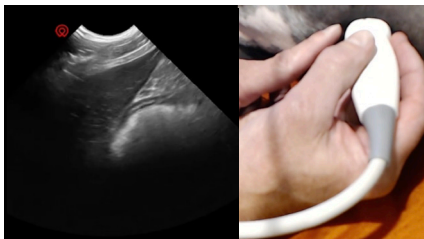
You see the white curved linear line (diaphragm). This must be seen in liver imaging.

# Ultrasound step-by-step

## Long Liver



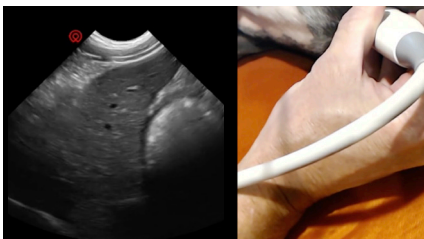
If you go more caudally, you can see the stomach and the shape of the liver. It should be sharp and at an angle.



The far right hand side of the liver shows the leading edge of the liver. It should be sharp. If it is rounded, it is a sign of diseases.



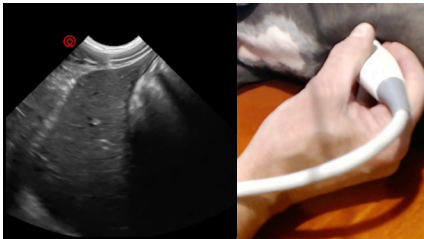
Fanning is not = windshield wiping  
Fanning is = point of the probe that stays on patient at all times.



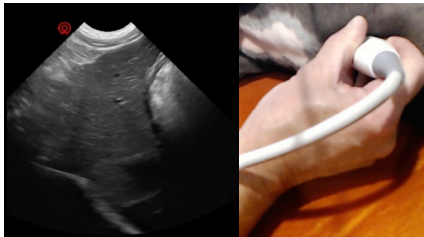
You lift the cable to look to the right, middle, and left of the liver.

# Ultrasound step-by-step

## Long Liver



The rocking motion allows for you to go from caudal to cranial. Fanning allows us to go left to right.



You can see some sludge in the gallbladder, which goes away when we look left. This is a non-dependent location.

# About Core Imaging

---

Core Imaging provides leading-edge ultrasound technology to veterinarians around the World. Core Imaging's groundbreaking digital ultrasound systems include a full suite of high-resolution and portable ultrasound solutions. CoreVu Scan Assist connects you to educators, and sonographers in real-time—wherever you are.

Ultrasounds in the Core Imaging family are cloud connected to give you real-time access to sonographer assistance with CoreVu Scan Assist and CloudCore for image interpretation.

Whether you are an entry level user or a board certified radiologist, cardiologist or internist, Core Imaging has a solution to meet your imaging needs.

*All Core Imaging systems come equipped with comprehensive onboarding training.*

## Contact Core Imaging

Visit [coreimaging.com](http://coreimaging.com)  
Email [info@coreimaging.com](mailto:info@coreimaging.com)  
Call 616-785-CORE



CORE IMAGING